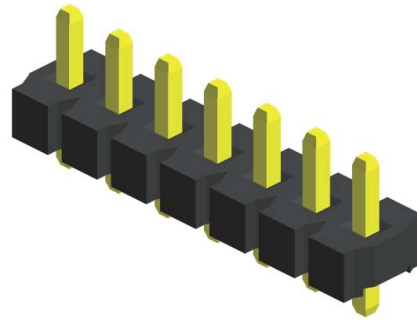


## Specifications

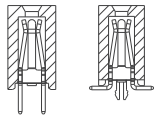
Current Rating : 7.9 Ampere  
 Insulation Resistance : 1000 MΩ Min  
 Dielectric Withstanding : 1500V AC  
 Contact Resistance : 20 mΩ Max  
 Operating Temperature : -40°C to +105°C

## Materials

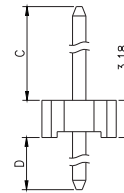
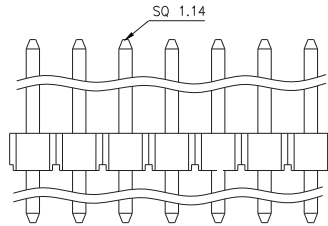
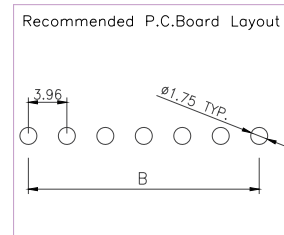
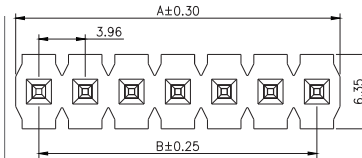
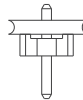
Contact Material : Brass  
 Insulation Material : High Temperature Thermoplastic, 94V-0 LCP



## Mating with



CFB9S102 CFB9E101



No. of Pins/Row	Dimension Information		No. of Pins/Row	Dimension Information		No. of Pins/Row	Dimension Information	
	A	B		A	B		A	B
02	7.92	3.96	11	43.56	39.60	21	83.16	79.20
03	11.88	7.92	12	47.52	43.56	22	87.12	83.16
04	15.84	11.88	13	51.48	47.52	23	91.08	87.12
05	19.80	15.84	14	55.44	51.48	24	95.04	91.08
06	23.76	19.80	15	59.40	55.44			
07	27.72	23.76	16	63.36	59.40			
08	31.68	27.72	17	67.32	63.36			
09	35.64	31.68	18	71.28	67.32			
10	39.60	35.64	19	75.24	71.28			
			20	79.20	75.24			

## Ordering Codes

**C MA9S103 - XX XX X XXX X X B X**

**No Of Pins Per Row**  
02 - 24

**Plating Code**  
03 - Tin  
06 - Gold Flash

**Material Code**  
C - LCP

**Colour Code**  
N - Black

**Pin Length (C/D)**  
 001 : C=4.55 / D=2.55  
 002 : C=11.45 / D=4.45  
 004 : C=20.55 / D=4.00  
 005 : C=3.80 / D=12.10  
For special length requirement  
Please contact our sales personnel

**Post**  
W - W/O Post

**Packing Code**  
A - Box

Due to technical progress, all designs, specifications and components are subject to change without notice.