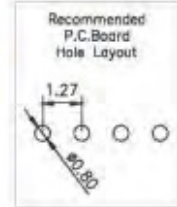
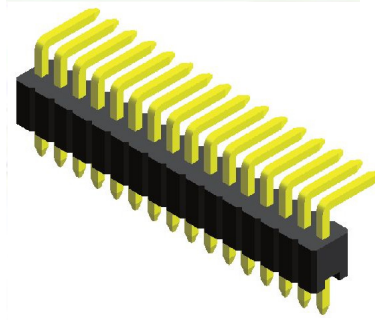


Specifications

Current Rating : 1.0 Ampere
 Insulation Resistance : 1000 MΩ Min
 Dielectric Withstanding : 300V AC
 Contact Resistance : 20 mΩ Max
 Operating Temperature : -40°C to +105°C

Materials

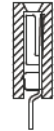
Contact Material : Brass
 Insulation Material : High Temperature Thermoplastic, 94V-0 LCP



Mating with



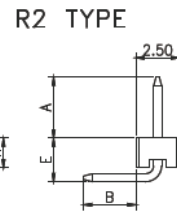
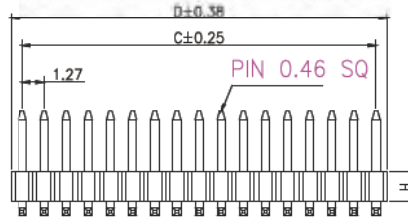
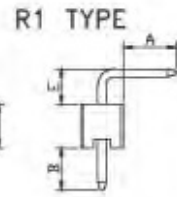
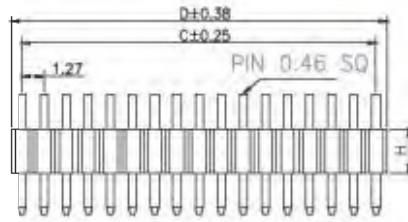
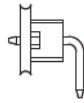
CFB5S101



CFB5S102



CFB5S113



No. of Pins/Row	Dimension Information			No. of Pins/Row	Dimension Information			No. of Pins/Row	Dimension Information			No. of Pins/Row	Dimension Information		
	C	D			C	D			C	D			C	D	
02	1.27	2.54		14	16.51	17.78		27	33.02	34.29		40	49.53	50.80	
03	2.54	3.81		15	17.78	19.05		28	34.29	35.56		41	50.80	52.07	
04	3.81	5.08		16	19.05	20.32		29	35.56	36.83		42	52.07	53.34	
05	5.08	6.35		17	20.32	21.59		30	36.83	38.10		43	53.34	54.61	
06	6.35	7.62		18	21.59	22.86		31	38.10	39.37		44	54.61	55.88	
07	7.62	8.89		19	22.86	24.13		32	39.37	40.64		45	55.88	57.15	
08	8.89	10.16		20	24.13	25.40		33	40.64	41.91		46	57.15	57.42	
09	10.16	11.43		21	25.40	26.67		34	41.91	43.18		47	57.42	59.69	
10	11.43	12.70		22	26.67	27.94		35	43.18	44.45		48	59.69	60.96	
11	12.70	13.97		23	27.94	29.21		36	44.45	45.72		49	60.96	62.23	
12	13.97	15.24		24	29.21	30.48		37	45.72	46.99		50	62.23	63.50	
13	15.24	16.51		25	30.48	31.75		38	46.99	48.26					
				26	31.75	33.02		39	48.26	49.53					

Ordering Codes

C MA5N XX - XX XX X XXX X X B X

Height Option (H)
01 : H=2.54
15 : H=1.40
Material Code
C - LCP
Colour Code
N - Black
Post
W - W/O Post
Packing Code
C - Tube

No Of Pins Per Row
02 - 50

Plating Code
03 - Tin
06 - Gold Flash
09 - Gold Flash/ Tin

Pin Length (C/D)
 CMA5N101 033 : A=3.75 / B=2.80 / E=1.70 (R1)
 CMA5N115 005 : A=2.90 / B=2.45 / E=2.80 (R2)

For special length requirement
 Please contact our sales personnel

Due to technical progress, all designs, specifications and components are subject to change without notice.