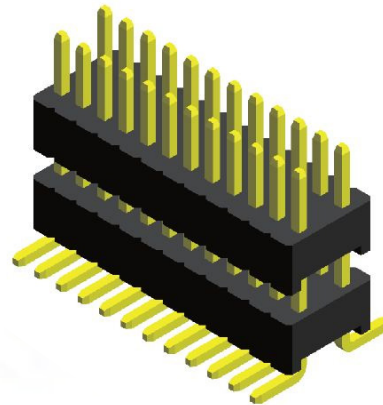


Specifications

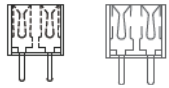
Current Rating : 1.0 Ampere
 Insulation Resistance : 1000 MΩ Min
 Dielectric Withstanding : 300V AC
 Contact Resistance : 20 mΩ Max
 Operating Temperature : -40°C to +105°C

Materials

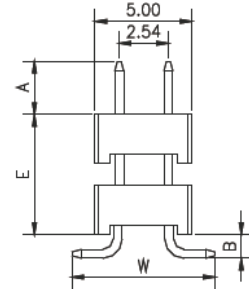
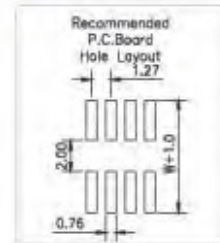
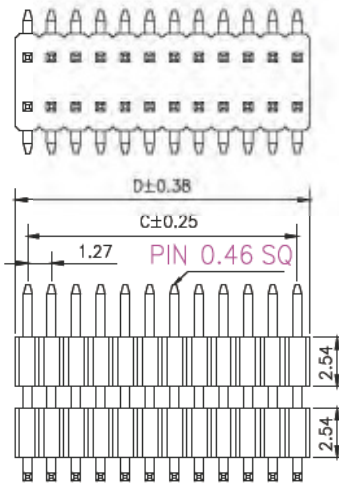
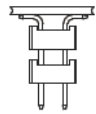
Contact Material : Brass
 Insulation Material : High Temperature Thermoplastic, 94V-0 LCP



Mating with



CFB5S201 CFB5S213



No. of Pins/Row	Dimension Information			No. of Pins/Row	Dimension Information			No. of Pins/Row	Dimension Information			No. of Pins/Row	Dimension Information		
	C	D			C	D			C	D			C	D	
02	1.27	2.54		11	12.70	13.97		21	25.40	26.67		31	38.10	39.37	
03	2.54	3.81		12	13.97	15.24		22	26.67	27.94		32	39.37	40.64	
04	3.81	5.08		13	15.24	16.51		23	27.94	29.21		33	40.64	41.91	
05	5.08	6.35		14	16.51	17.78		24	29.21	30.48		34	41.91	43.18	
06	6.35	7.62		15	17.78	19.05		25	30.48	31.75		35	43.18	44.45	
07	7.62	8.89		16	19.05	20.32		26	31.75	33.02		36	44.45	45.72	
08	8.89	10.16		17	20.32	21.59		27	33.02	34.29		37	45.72	46.99	
09	10.16	11.43		18	21.59	22.86		28	34.29	35.56		38	46.99	48.26	
10	11.43	12.70		19	22.86	24.13		29	35.56	36.83		39	48.26	49.53	
				20	24.13	25.40		30	36.83	38.10		40	49.53	50.80	

Ordering Codes

C MA5E260 - XX XX X XXX X X B X

- XX**: No Of Pins Per Row (02 - 40)
- XX**: Plating Code (03 - Tin, 06 - Gold Flash, 09 - Gold Flash/ Tin)
- X**: Material Code (C - LCP)
- XXX**: Pin Length (C/D)
 - 007 : A=2.80/B=1.27/E=5.60/W=7.50
 - 009 : A=3.00/B=1.30/E=5.08/W=7.50
 For special length requirement Please contact our sales personnel
- X**: Colour Code (N - Black)
- X**: Post (W - W/O Post)
- B**: Packing Code (C - Tube)

Due to technical progress, all designs, specifications and components are subject to change without notice.