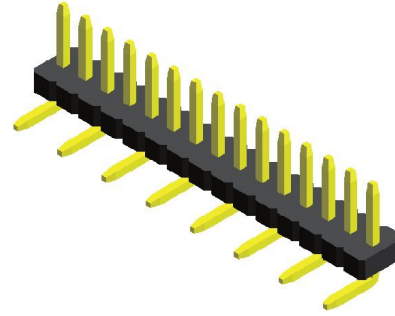


## Specifications

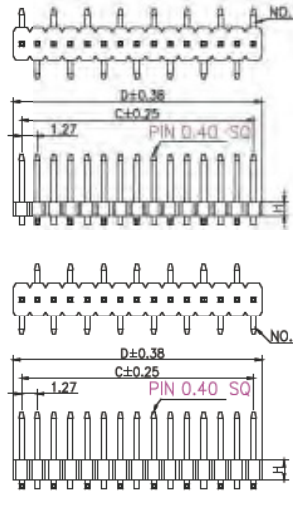
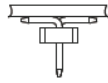
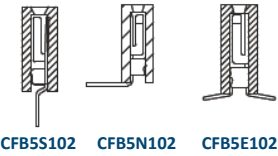
Current Rating :	1.0 Ampere
Insulation Resistance :	1000 MΩ Min
Dielectric Withstanding :	300V AC
Contact Resistance :	20 mΩ Max
Operating Temperature :	-40°C to +105°C

## Materials

Contact Material :	Brass
Insulation Material :	High Temperature Thermoplastic, 94V-0 LCP

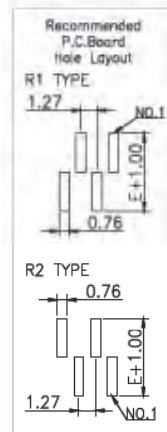


## Mating with



R1 TYPE

R2 TYPE



No. of Pins/Row	Dimension Information			No. of Pins/Row	Dimension Information			No. of Pins/Row	Dimension Information			No. of Pins/Row	Dimension Information		
	C	D			C	D			C	D			C	D	
02	1.27	2.54		11	12.70	13.97		21	25.40	26.67		31	38.10	39.37	
03	2.54	3.81		12	13.97	15.24		22	26.67	27.94		32	39.37	40.64	
04	3.81	5.08		13	15.24	16.51		23	27.94	29.21		33	40.64	41.91	
05	5.08	6.35		14	16.51	17.78		24	29.21	30.48					
06	6.35	7.62		15	17.78	19.05		25	30.48	31.75					
07	7.62	8.89		16	19.05	20.32		26	31.75	33.02					
08	8.89	10.16		17	20.32	21.59		27	33.02	34.29					
09	10.16	11.43		18	21.59	22.86		28	34.29	35.56					
10	11.43	12.70		19	22.86	24.13		29	35.56	36.83					
				20	24.13	25.40		30	36.83	38.10					

## Ordering Codes

**C MA5E1XX** - **XX** **XX** **X** **XXX** **X** **X** **B** **X**

Height Option (H)  
 08 : H=1.00 (Nylon 6T)  
 09 : H=1.50  
 11 : H=2.00

**No Of Pins Per Row**  
02 - 33

**Material Code**  
C - LCP

**Plating Code**  
03 - Tin  
06 - Gold Flash  
09 - Gold Flash/ Tin

**Colour Code**  
N - Black

**Post**  
W - W/O Post

**Packing Code**  
C - Tube

**Pin Length (C/D)**  
 CMA5E108 009 : A=3.00 / B=4.30 / E=5.50 (R2)  
 CMA5E109 024 : A=3.00 / B=4.80 / E=5.50 (R1)  
 CMA5E109 004 : A=3.00 / B=1.70 / E=5.50 (R2)  
 CMA5E111 003 : A=5.00 / B=7.20 / E=5.00 (R1)

For special length requirement  
Please contact our sales personnel

Due to technical progress, all designs, specifications and components are subject to change without notice.