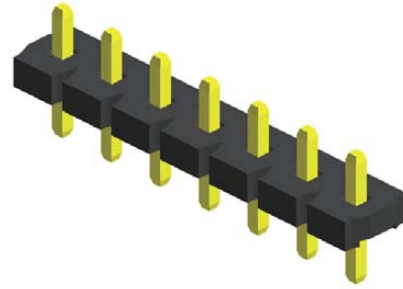


## Specifications

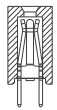
Current Rating :	7.9 Ampere
Insulation Resistance :	1000 MΩ Min
Dielectric Withstanding :	1500V AC
Contact Resistance :	20 mΩ Max
Operating Temperature :	-40°C to +105°C



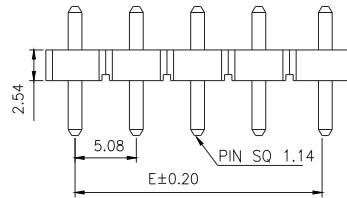
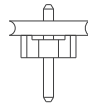
## Materials

Contact Material :	Brass
Insulation Material :	High Temperature Thermoplastic, 94V-0 LCP

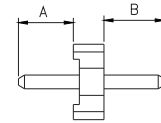
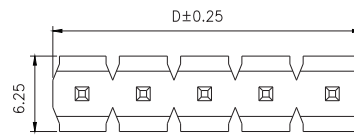
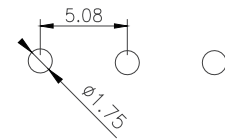
## Mating with



CFB12S110



Recommended P.C.Board Layout



No. of Pins/Row	Dimension Information		No. of Pins/Row	Dimension Information	
	D	E		D	E
02	10.16	5.08	11	55.88	50.80
03	15.24	10.16	12	60.96	55.88
04	20.32	15.24	13	66.04	60.96
05	25.40	20.32	14	71.12	66.04
06	30.48	25.40	15	76.20	71.12
07	35.56	30.48	16	81.28	76.20
08	40.64	35.56	17	86.36	81.28
09	45.72	40.64	18	91.44	86.36
10	50.80	45.72	19	96.52	91.44
			20	101.60	95.62

## Ordering Codes

**CMA12S101 - XX**

No Of Pins Per Row  
02 - 20

Plating Code  
03 - Tin  
06 - Gold Flash

**XX**

Material Code  
C - LCP

**X**

**XXX**

Pin Length (C/D)

008 : A=4.55 / B=3.80

010 : A=3.00 / B=11.00

For special length requirement  
Please contact our sales personnel

**X**

Colour Code  
N - Black

**X**

Post  
W - W/O Post

**B**

Packing Code  
A - Box

**X**

Due to technical progress, all designs, specifications and components are subject to change without notice.