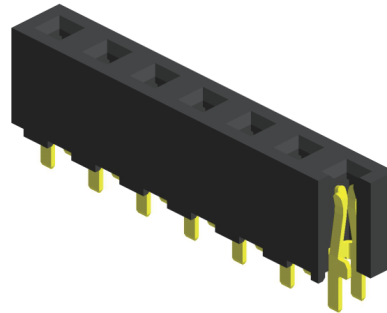


Specifications

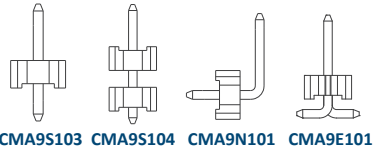
Current Rating : 7.9 Ampere
 Insulation Resistance : 1000 MΩ Min
 Dielectric Withstanding : 1500V AC
 Contact Resistance : 20 mΩ Max
 Operating Temperature : -40°C to +105°C

Materials

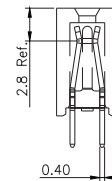
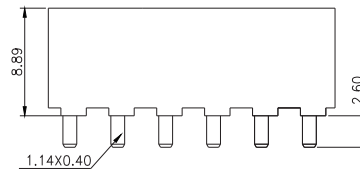
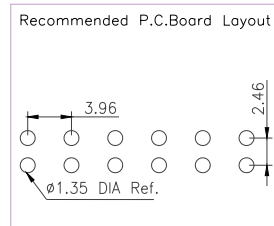
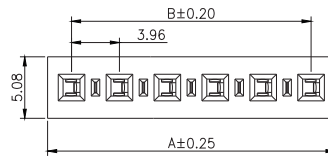
Contact Material : Phosphor Bronze
 Insulation Material : High Temperature Thermoplastic, 94V-0 LCP



Mating with

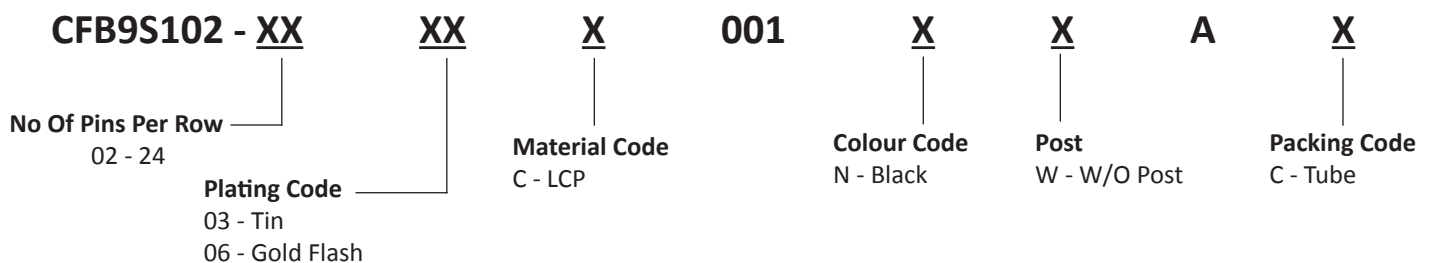


P.S. : Suggested mating pin length : 3,8 ~8,5 mm



No. of Pins/Row	Dimension Information		No. of Pins/Row	Dimension Information		No. of Pins/Row	Dimension Information	
	A	B		A	B		A	B
02	7.92	3.96	11	43.56	39.60	21	83.16	79.20
03	11.88	7.92	12	47.52	43.56	22	87.12	83.16
04	15.84	11.88	13	51.48	47.52	23	91.08	87.12
05	19.80	15.84	14	55.44	51.48	24	95.04	91.08
06	23.76	19.80	15	59.40	55.44			
07	27.72	23.76	16	63.36	59.40			
08	31.68	27.72	17	67.32	63.36			
09	35.64	31.68	18	71.28	67.32			
10	39.60	35.64	19	75.24	71.28			
			20	79.20	75.24			

Ordering Codes



Due to technical progress, all designs, specifications and components are subject to change without notice.