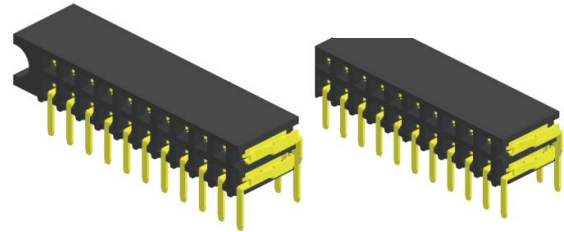


Specifications

Current Rating : 3.0 Ampere
 Insulation Resistance : 1000 MΩ Min
 Dielectric Withstanding : 600V AC
 Contact Resistance : 20 mΩ Max
 Operating Temperature : -40°C to +105°C

Materials

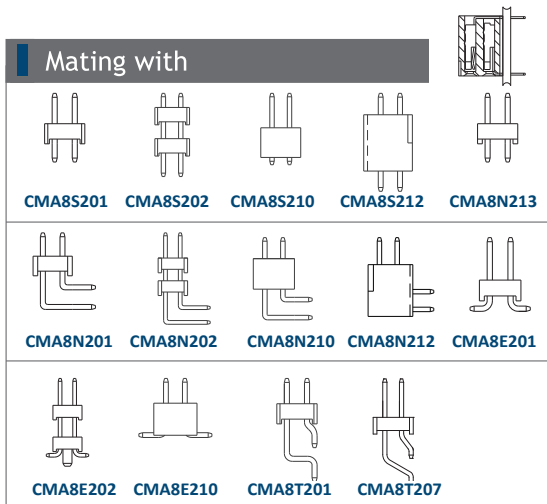
Contact Material : Phosphor Bronze
 Insulation Material : High Temperature Thermoplastic, 94V-0 PBT



B Type

A Type

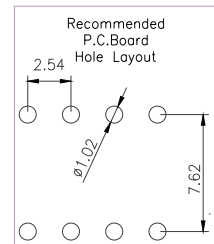
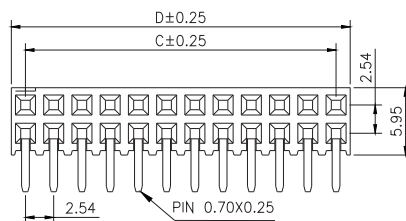
Mating with



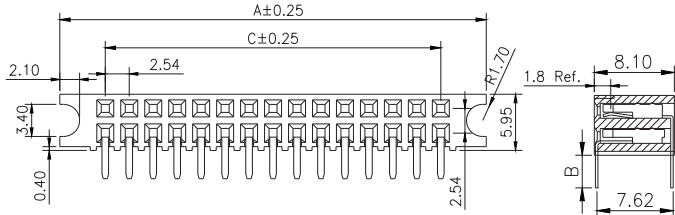
CMA8S201 CMA8S202 CMA8S210 CMA8S212 CMA8N213
 CMA8N201 CMA8N202 CMA8N210 CMA8N212 CMA8E201
 CMA8E202 CMA8E210 CMA8T201 CMA8T207

P.S. : Suggested mating pin length : 4.0 ~ 7.5 mm

A TYPE



B TYPE



| No. of Pins/Row | Dimension Information | | | No. of Pins/Row | Dimension Information | | | No. of Pins/Row | Dimension Information | | |
|-----------------|-----------------------|-------|-------|-----------------|-----------------------|-------|-------|-----------------|-----------------------|-------|--------|
| | A | C | D | | A | C | D | | A | C | D |
| 03 | 14.72 | 5.08 | 7.62 | 11 | 35.04 | 25.40 | 27.94 | 21 | 60.44 | 50.80 | 53.34 |
| 04 | 17.26 | 7.62 | 10.16 | 12 | 37.58 | 27.94 | 30.48 | 22 | 62.98 | 53.34 | 55.88 |
| 05 | 19.80 | 10.16 | 12.70 | 13 | 40.12 | 30.48 | 33.02 | 23 | 65.52 | 55.88 | 58.42 |
| 06 | 22.34 | 12.70 | 15.24 | 14 | 42.66 | 33.02 | 35.56 | 24 | 68.06 | 58.42 | 60.96 |
| 07 | 24.88 | 15.24 | 17.78 | 15 | 45.20 | 35.56 | 38.10 | 25 | 70.60 | 60.96 | 63.50 |
| 08 | 27.42 | 17.78 | 20.32 | 16 | 47.74 | 38.10 | 40.64 | 26 | 73.14 | 63.50 | 66.04 |
| 09 | 29.96 | 20.32 | 22.86 | 17 | 50.28 | 40.64 | 43.18 | 27 | 75.68 | 66.04 | 68.58 |
| 10 | 32.50 | 22.86 | 25.40 | 18 | 52.82 | 43.18 | 45.72 | 28 | 78.22 | 68.58 | 71.12 |
| | | | | 19 | 55.36 | 45.72 | 48.26 | 29 | 80.76 | 71.12 | 73.66 |
| | | | | 20 | 57.90 | 48.26 | 50.80 | 30 | 83.30 | 73.66 | 76.20 |
| | | | | | | | | 31 | 85.84 | 76.20 | 78.74 |
| | | | | | | | | 32 | 88.38 | 78.74 | 81.28 |
| | | | | | | | | 33 | 90.92 | 81.28 | 83.82 |
| | | | | | | | | 34 | 93.46 | 83.82 | 86.36 |
| | | | | | | | | 35 | 96.00 | 86.36 | 88.90 |
| | | | | | | | | 36 | 98.54 | 88.90 | 91.44 |
| | | | | | | | | 37 | 101.08 | 91.44 | 93.98 |
| | | | | | | | | 38 | 103.62 | 93.98 | 96.52 |
| | | | | | | | | 39 | 106.16 | 96.52 | 99.06 |
| | | | | | | | | 40 | 108.70 | 99.06 | 101.60 |

Ordering Codes

C FB8N210 - XX XX X XXX X X A X

No Of Pins Per Row
03 - 40

Material Code
A - PBT

Plating Code
03 - Tin
06 - Gold Flash
09 - Gold Flash/ Tin

Pin Length (C/D)
001 : B=3.00 (A Type)
015 : B=3.20 (B Type)

Colour Code
N - Black

Post
W - W/O Post

Packing Code
C - Tube

For special length requirement
 Please contact our sales personnel

Due to technical progress, all designs, specifications and components are subject to change without notice.