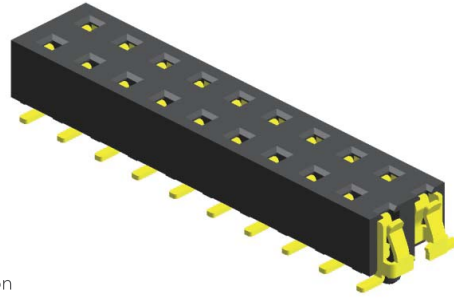


## Specifications

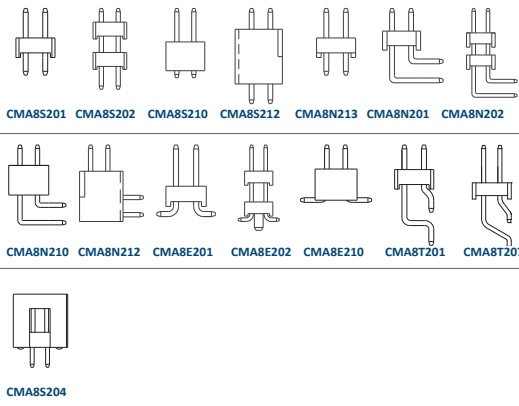
Current Rating :	3.0 Ampere
Insulation Resistance :	1000 MΩ Min
Dielectric Withstanding :	600V AC
Contact Resistance :	20 mΩ Max
Operating Temperature :	-40°C to +105°C

## Materials

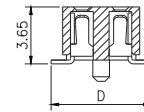
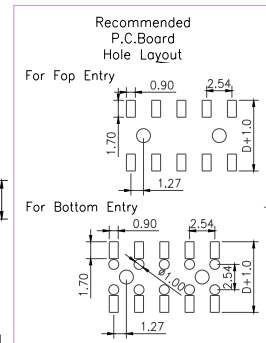
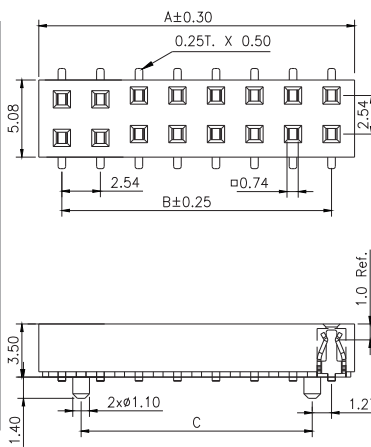
Contact Material :	Phosphor Bronze
Insulation Material :	High Temperature Thermoplastic, 94V-0 Nylon



## Mating with



P.S. : Suggested mating pin length : 2.5 ~ 3.0 mm



No. of Pins/Row	Dimension Information			No. of Pins/Row	Dimension Information			No. of Pins/Row	Dimension Information			No. of Pins/Row	Dimension Information		
	A	B	C		A	B	C		A	B	C		A	B	C
02	5.58	2.54		11	28.44	25.40	22.86	21	53.84	50.80	48.26	31	79.24	76.20	73.66
03	8.12	5.08	2.54	12	30.98	27.94	25.40	22	56.38	53.34	50.80	32	81.78	78.74	76.20
04	10.66	7.62	5.08	13	33.52	30.48	27.94	23	58.92	55.88	53.34	33	84.32	81.28	78.74
05	13.20	10.16	7.62	14	36.06	33.02	30.48	24	61.46	58.42	55.88	34	86.86	83.82	81.28
06	15.74	12.70	10.16	15	38.60	35.56	33.02	25	64.00	60.96	58.42	35	89.40	86.36	83.82
07	18.28	15.24	12.70	16	41.14	38.10	35.56	26	66.54	63.50	60.96	36	91.94	88.90	86.36
08	20.82	17.78	15.24	17	43.68	40.64	38.10	27	69.08	66.04	63.50	37	94.48	91.44	88.90
09	23.36	20.32	17.78	18	46.22	43.18	40.64	28	71.62	68.58	66.04	38	97.02	93.98	91.44
10	25.90	22.86	20.32	19	48.76	45.72	43.18	29	74.16	71.12	68.58	39	99.56	96.52	93.98
				20	51.30	48.26	45.72	30	76.70	73.66	71.12	40	102.10	99.06	96.52

## Ordering Codes

**C FB8E211 - XX XX X XXX X X A X**

**No Of Pins Per Row**  
02 - 40

**Plating Code**  
03 - Tin  
06 - Gold Flash  
09 - Gold Flash/ Tin

**Material Code**  
B - NYLON

**Pin Length (C/D)**  
□ 001 □ : D=6.60

**Colour Code**  
N - Black

**Post**  
W - W/O Post

**Packing Code**  
C - Tube

For special length requirement  
Please contact our sales personnel

Due to technical progress, all designs, specifications and components are subject to change without notice.