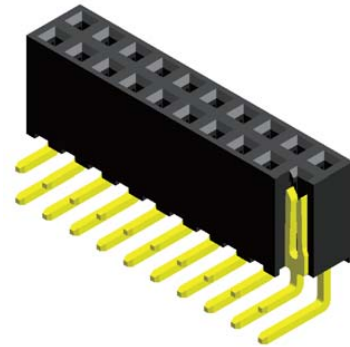


## Specifications

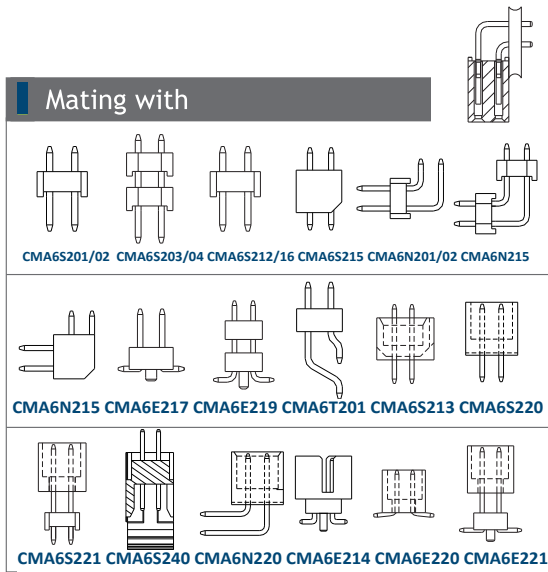
Current Rating :	2.0 Ampere
Insulation Resistance :	1000 MΩ Min
Dielectric Withstanding :	500V AC
Contact Resistance :	20 mΩ Max
Operating Temperature :	-40°C to +105°C

## Materials

Contact Material :	Phosphor Bronze
Insulation Material :	High Temperature Thermoplastic, 94V-0 Nylon



## Mating with

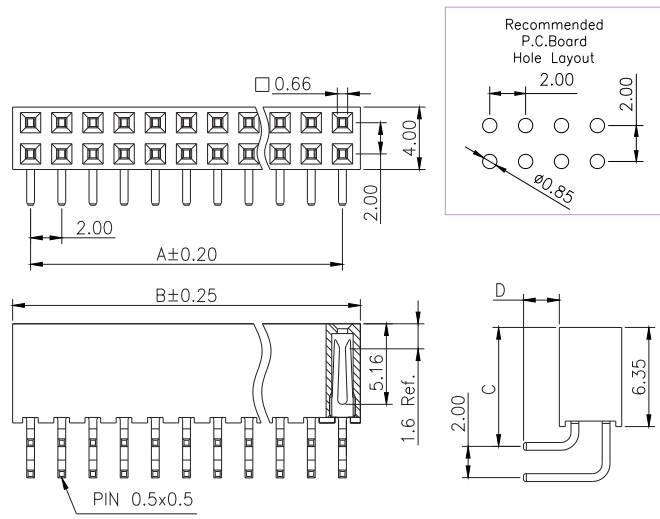


CMA6S201/02 CMA6S203/04 CMA6S212/16 CMA6S215 CMA6N201/02 CMA6N215

CMA6N215 CMA6E217 CMA6E219 CMA6T201 CMA6S213 CMA6S220

CMA6S221 CMA6S240 CMA6N220 CMA6E214 CMA6E220 CMA6E221

P.S. : Suggested mating pin length : 3.0 ~ 4.9 mm



No. of Pins/Row	Dimension Information		No. of Pins/Row	Dimension Information		No. of Pins/Row	Dimension Information		No. of Pins/Row	Dimension Information	
	A	B		A	B		A	B		A	B
02	2.00	4.30	11	20.00	22.30	21	40.00	42.30	31	60.00	62.30
03	4.00	6.30	12	22.00	24.30	22	42.00	44.30	32	62.00	64.30
04	6.00	8.30	13	24.00	26.30	23	44.00	46.30	33	64.00	66.30
05	8.00	10.30	14	26.00	28.30	24	46.00	48.30	34	66.00	68.30
06	10.00	12.30	15	28.00	30.30	25	48.00	50.30	35	68.00	70.30
07	12.00	14.30	16	30.00	32.30	26	50.00	52.30	36	70.00	72.30
08	14.00	16.30	17	32.00	34.30	27	52.00	54.30	37	72.00	74.30
09	16.00	18.30	18	34.00	36.30	28	54.00	56.30	38	74.00	76.30
10	18.00	20.30	19	36.00	38.30	29	56.00	58.30	39	76.00	78.30
			20	38.00	40.30	30	58.00	60.30	40	78.00	80.30

## Ordering Codes

**C FB6N207 - XX XX X XXX X X A X**

**No Of Pins Per Row**  
02 - 40

**Plating Code**  
03 - Tin  
06 - Gold Flash  
09 - Gold Flash/ Tin

**Material Code**  
B - NYLON

**Pin Length (C/D)**  
001 : C=7.60 / D=2.30

**Colour Code**  
N - Black

**Post**  
W - W/O Post

**Packing Code**  
C - Tube

For special length requirement  
Please contact our sales personnel

Due to technical progress, all designs, specifications and components are subject to change without notice.