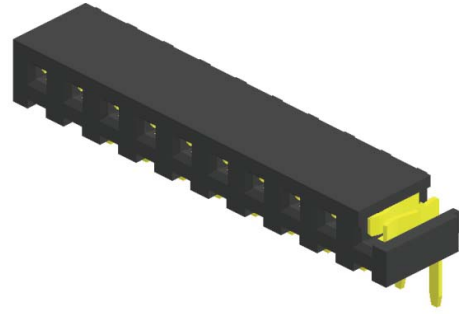


Specifications

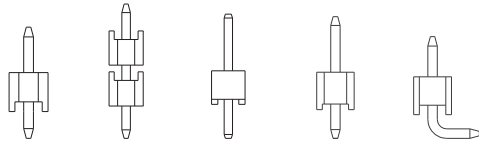
Current Rating :	2.0 Ampere
Insulation Resistance :	1000 MΩ Min
Dielectric Withstanding :	500V AC
Contact Resistance :	20 mΩ Max
Operating Temperature :	-40°C to +105°C

Materials

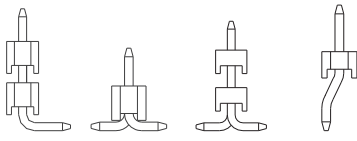
Contact Material :	Phosphor Bronze
Insulation Material :	High Temperature Thermoplastic, 94V-0 Nylon



Mating with

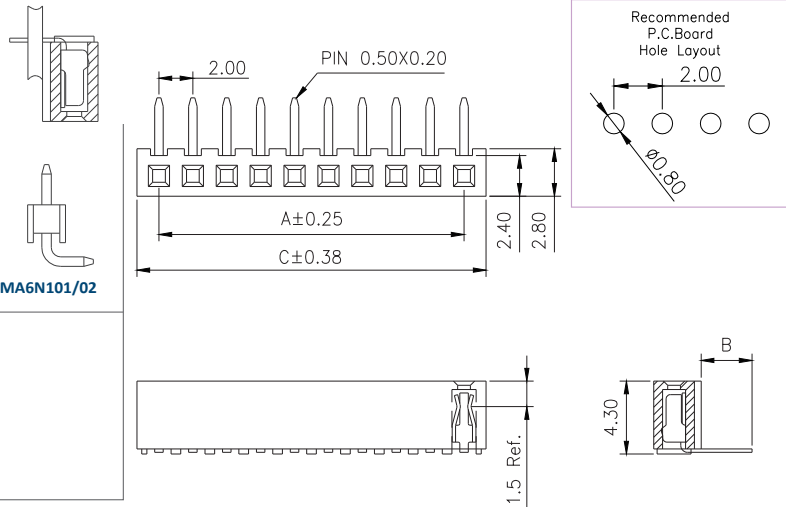


CMA6S101/02 CMA6S103/04 CMA6S110/11 SMA6S113 CMA6N101/02



CMA6N106 CMA6E101/02 CMA6E104 CMA6T102

P.S. : Suggested mating pin length : 3.0 ~ 4.0 mm



No. of Pins/Row	Dimension Information			No. of Pins/Row	Dimension Information			No. of Pins/Row	Dimension Information			No. of Pins/Row	Dimension Information		
	A	C			A	C			A	C			A	C	
02	2.00	4.60		11	20.00	22.60		21	40.00	42.60		31	60.00	62.60	
03	4.00	6.60		12	22.00	24.60		22	42.00	44.60		32	62.00	64.60	
04	6.00	8.60		13	24.00	26.60		23	44.00	46.60		33	64.00	66.60	
05	8.00	10.60		14	26.00	28.60		24	46.00	48.60		34	66.00	68.60	
06	10.00	12.60		15	28.00	30.60		25	48.00	50.60		35	68.00	70.60	
07	12.00	14.60		16	30.00	32.60		26	50.00	52.60		36	70.00	72.60	
08	14.00	16.60		17	32.00	34.60		27	52.00	54.60		37	72.00	74.60	
09	16.00	18.60		18	34.00	36.60		28	54.00	56.60		38	74.00	76.60	
10	18.00	20.60		19	36.00	38.60		29	56.00	58.60		39	76.00	78.60	
				20	38.00	40.60		30	58.00	60.60		40	78.00	80.60	

Ordering Codes

C FB6N102 - **XX** **XX** **X** **XXX** **X** **X** **A** **X**

|
No Of Pins Per Row
 02 - 40

|
Plating Code
 03 - Tin
 06 - Gold Flash
 09 - Gold Flash/ Tin

|
Material Code
 B - NYLON

|
Pin Length (C/D)
 001 : B=3.00

|
Colour Code
 N - Black

|
Post
 W - W/O Post

|
Packing Code
 C - Tube

For special length requirement
Please contact our sales personnel

Due to technical progress, all designs, specifications and components are subject to change without notice.