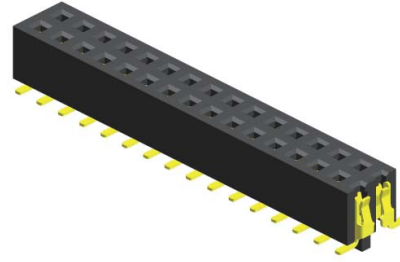


Specifications

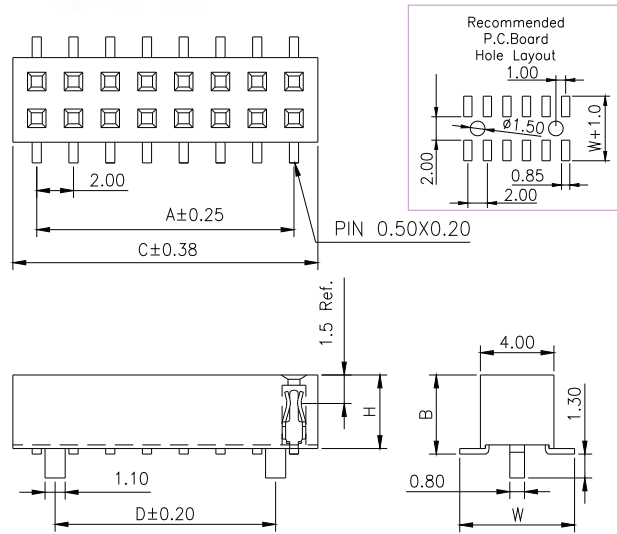
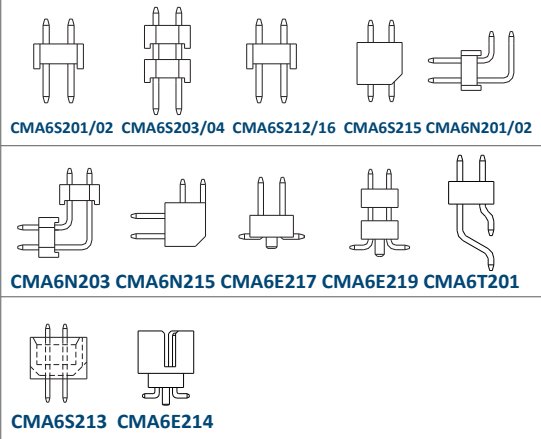
Current Rating :	2.0 Ampere
Insulation Resistance :	1000 MΩ Min
Dielectric Withstanding :	500V AC
Contact Resistance :	20 mΩ Max
Operating Temperature :	-40°C to +105°C

Materials

Contact Material :	Phosphor Bronze
Insulation Material :	High Temperature Thermoplastic, 94V-0 Nylon



Mating with



P.S. : Suggested mating pin length : 3.0 ~ 4.0 mm

No. of Pins/Row	Dimension Information			No. of Pins/Row	Dimension Information			No. of Pins/Row	Dimension Information		
	A	C	D		A	C	D		A	C	D
03	4.00	6.60	2.00	11	20.00	22.60	18.00	31	60.00	62.60	58.00
04	6.00	8.60	4.00	12	22.00	24.60	20.00	32	62.00	64.60	60.00
05	8.00	10.60	6.00	13	24.00	26.60	22.00	33	64.00	66.60	62.00
06	10.00	12.60	8.00	14	26.00	28.60	24.00	34	66.00	68.60	64.00
07	12.00	14.60	10.00	15	28.00	30.60	26.00	35	68.00	70.60	66.00
08	14.00	16.60	12.00	16	30.00	32.60	28.00	36	70.00	72.60	68.00
09	16.00	18.60	14.00	17	32.00	34.60	30.00	37	72.00	74.60	70.00
10	18.00	20.60	16.00	18	34.00	36.60	32.00	38	74.00	76.60	72.00
				19	36.00	38.60	34.00	39	76.00	78.60	74.00
				20	38.00	40.60	36.00	40	78.00	80.60	76.00
				21	40.00	42.60	38.00				
				22	42.00	44.60	40.00				
				23	44.00	46.60	42.00				
				24	46.00	48.60	44.00				
				25	48.00	50.60	46.00				
				26	50.00	52.60	48.00				
				27	52.00	54.60	50.00				
				28	54.00	56.60	52.00				
				29	56.00	58.60	54.00				
				30	58.00	60.60	56.00				

Ordering Codes

C FB6E2XX - XX XX X XXX X X A X

Height Option (H)
 08 : H=4.30
 10 : H=4.00

No Of Pins Per Row
 03 - 40

Plating Code
 03 - Tin
 06 - Gold Flash
 09 - Gold Flash/ Tin

Material Code
 B - NYLON

Pin Length (C/D)
 CFB6E208 001 : B=4.50 / W=5.60
 CFB6E210 002 : B=4.30 / W=6.25

Colour Code
 N - Black

Post
 W - W/O Post

Packing Code
 C - Tube

For special length requirement
 Please contact our sales personnel

Due to technical progress, all designs, specifications and components are subject to change without notice.