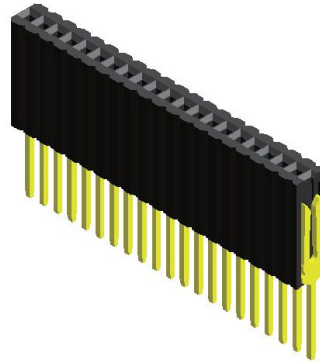


## Specifications

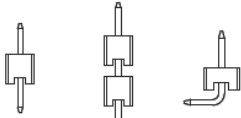
Current Rating : 1.0 Ampere  
 Insulation Resistance : 1000 MΩ Min  
 Dielectric Withstanding : 300V AC  
 Contact Resistance : 20 mΩ Max  
 Operating Temperature : -40°C to +105°C

## Materials

Contact Material : Phosphor Bronze  
 Insulation Material : High Temperature Thermoplastic, 94V-0 LCP

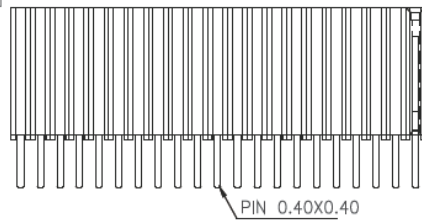
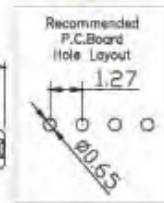
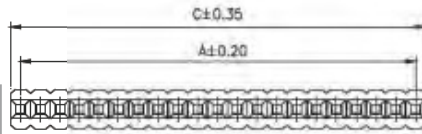


## Mating with



CMA5S101 CMA5S122 CMA5N101

P.S. : Suggested mating pin length : 3.5 ~ 6.4 mm



No. of Pins/Row	Dimension Information		No. of Pins/Row	Dimension Information		No. of Pins/Row	Dimension Information		No. of Pins/Row	Dimension Information	
	A	C		A	C		A	C		A	C
02	1.27	2.54	11	12.70	13.97	21	25.40	26.67	31	38.10	39.37
03	2.54	3.81	12	13.97	15.24	22	26.67	27.94	32	39.37	40.64
04	3.81	5.08	13	15.24	16.51	23	27.94	29.21	33	40.64	41.91
05	5.08	6.35	14	16.51	17.78	24	29.21	30.48	34	41.91	43.18
06	6.35	7.62	15	17.78	19.05	25	30.48	31.75	35	43.18	44.45
07	7.62	8.89	16	19.05	20.32	26	31.75	33.02			
08	8.89	10.16	17	20.32	21.59	27	33.02	34.29			
09	10.16	11.43	18	21.59	22.86	28	34.29	35.56			
10	11.43	12.70	19	22.86	24.13	29	35.56	36.83			
			20	24.13	25.40	30	36.83	38.10			

## Ordering Codes

**C FB5S113** - **XX** **XX** **X** **XXX** **X** **X** **A** **X**

No Of Pins Per Row (02 - 35)  
 Plating Code (03 - Tin, 06 - Gold Flash, 09 - Gold Flash/ Tin)  
 Material Code (C - LCP)  
 Pin Length (C/D) (001 : B=3.00, 002 : B=2.70)  
 Colour Code (N - Black)  
 Post (W - W/O Post)  
 Packing Code (C - Tube)

For special length requirement  
 Please contact our sales personnel

Due to technical progress, all designs, specifications and components are subject to change without notice.