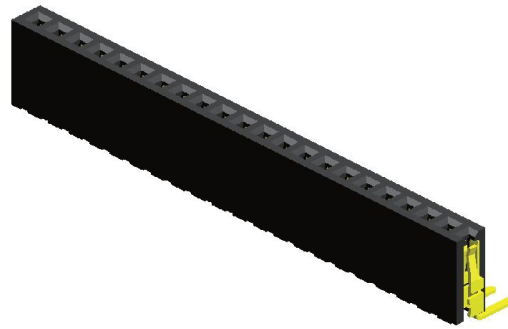


## Specifications

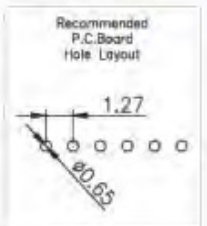
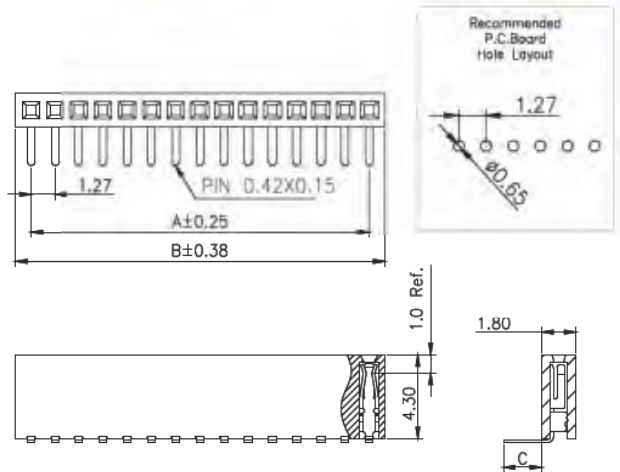
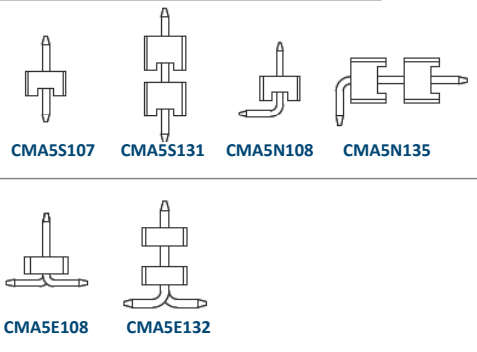
Current Rating : 1.0 Ampere  
 Insulation Resistance : 1000 MΩ Min  
 Dielectric Withstanding : 300V AC  
 Contact Resistance : 20 mΩ Max  
 Operating Temperature : -40°C to +105°C

## Materials

Contact Material : Phosphor Bronze  
 Insulation Material : High Temperature Thermoplastic, 94V-0 LCP



## Mating with



P.S. : Suggested mating pin length : 2.0 ~ 4.0 mm

No. of Pins/Row	Dimension Information		No. of Pins/Row	Dimension Information		No. of Pins/Row	Dimension Information		No. of Pins/Row	Dimension Information	
	A	B		A	B		A	B		A	B
02	1.27	2.94	11	12.70	14.32	21	25.40	27.02	31	38.10	39.72
03	2.54	4.16	12	13.97	15.59	22	26.67	28.29	32	39.37	40.99
04	3.81	5.43	13	15.24	16.86	23	27.94	29.56	33	40.64	42.26
05	5.08	6.70	14	16.51	18.13	24	29.21	30.83	34	41.91	43.53
06	6.35	7.97	15	17.78	19.40	25	30.48	32.10	35	43.18	44.80
07	7.62	9.24	16	19.05	20.67	26	31.75	33.37	36	44.45	46.07
08	8.89	10.51	17	20.32	21.94	27	33.02	34.64	37	45.72	47.34
09	10.16	11.78	18	21.59	23.21	28	34.29	35.91	38	46.99	48.61
10	11.43	13.05	19	22.86	24.48	29	35.56	37.18	39	48.26	49.88
			20	24.13	25.75	30	36.83	38.45	40	49.53	51.15

## Ordering Codes

**C FB5N102 - XX XX X XXX X X A X**

**No Of Pins Per Row**  
02 - 40

**Plating Code**  
03 - Tin  
06 - Gold Flash  
09 - Gold Flash/ Tin

**Material Code**  
C - LCP

**Pin Length (C/D)**  
001 : C=2.00

**Colour Code**  
N - Black

**Post**  
W - W/O Post

**Packing Code**  
C - Tube

For special length requirement  
Please contact our sales personnel

Due to technical progress, all designs, specifications and components are subject to change without notice.