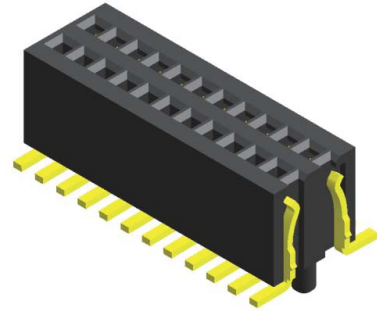


Specifications

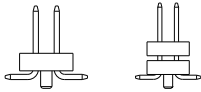
Current Rating : 0.5 Ampere
 Insulation Resistance : 500 MΩ Min
 Dielectric Withstanding : 200V AC
 Contact Resistance : 20 mΩ Max
 Operating Temperature : -40°C to +105°C

Materials

Contact Material : Phosphor Bronze
 Insulation Material : High Temperature Thermoplastic, 94V-0 LCP

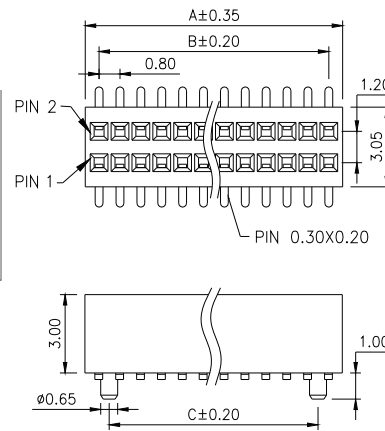
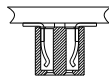


Mating with

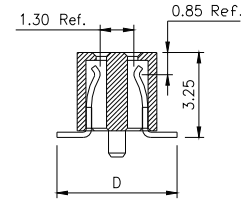
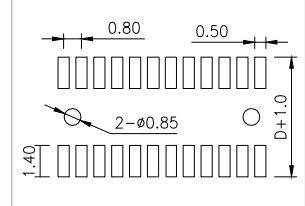


CMA2E211 CMA2E222

P.S. : Suggested mating pin length : 1.4 ~2.8 mm

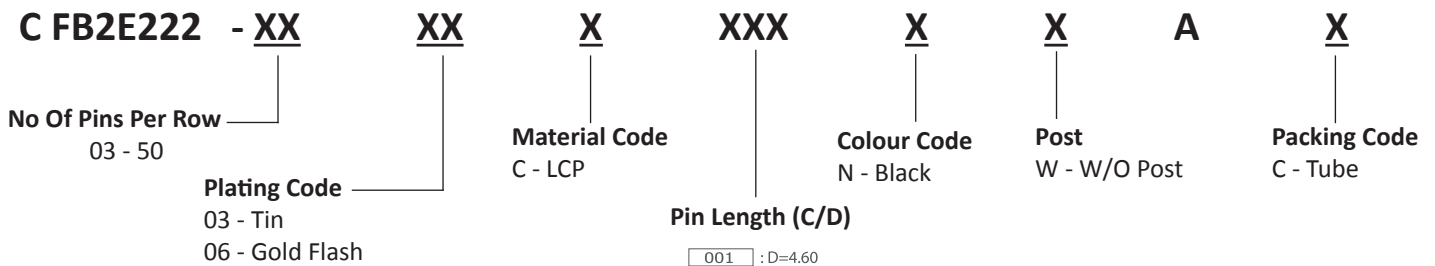


Recommended P.C.Board Layout



No. of Pins/Row	Dimension Information			No. of Pins/Row	Dimension Information			No. of Pins/Row	Dimension Information			No. of Pins/Row	Dimension Information		
	A	B	C		A	B	C		A	B	C		A	B	C
03	2.66	1.60	0.80	14	11.46	10.40	9.60	27	21.86	20.80	20.00	40	32.26	31.20	30.40
04	3.46	2.46	1.60	15	12.26	11.20	10.40	28	22.66	21.60	20.80	41	33.06	32.00	31.20
05	4.26	3.20	2.40	16	13.06	12.00	11.20	29	23.46	22.40	21.60	42	33.86	32.80	32.00
06	5.06	4.00	3.20	17	13.86	12.80	12.00	30	24.26	23.20	22.40	43	34.66	33.60	32.80
07	5.86	4.80	4.00	18	14.66	13.60	12.80	31	25.06	24.00	23.20	44	35.46	34.40	33.60
08	6.66	5.60	4.80	19	15.46	14.40	13.60	32	25.86	24.80	24.00	45	36.26	35.20	34.40
09	7.46	6.40	5.60	20	16.26	15.20	14.40	33	26.66	25.60	24.80	46	37.06	36.00	35.20
10	8.26	7.20	6.40	21	17.06	16.00	15.20	34	27.46	26.40	25.60	47	37.86	36.80	36.00
11	9.06	8.00	7.20	22	17.86	16.80	16.00	35	28.26	27.20	26.40	48	38.66	37.60	36.80
12	9.86	8.80	8.00	23	18.66	17.60	16.80	36	29.06	28.00	27.20	49	39.46	38.40	37.60
13	10.66	9.60	8.80	24	19.46	18.40	17.60	37	29.86	28.80	28.00	50	40.26	39.20	38.40
				25	20.26	19.20	18.40	38	30.66	29.60	28.80				
				26	21.06	20.00	19.20	39	31.46	30.40	29.60				

Ordering Codes



For special length requirement
 Please contact our sales personnel

Due to technical progress, all designs, specifications and components are subject to change without notice.