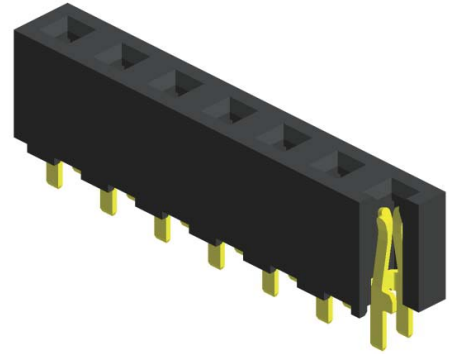


Specifications

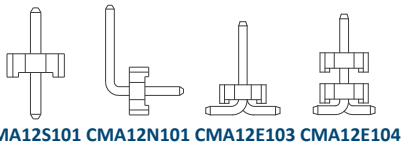
Current Rating :	7.9 Ampere
Insulation Resistance :	1000 MΩ Min
Dielectric Withstanding :	1500V AC
Contact Resistance :	20 mΩ Max
Operating Temperature :	-40°C to +105°C

Materials

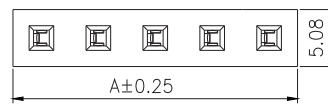
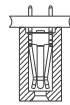
Contact Material :	Phosphor Bronze
Insulation Material :	High Temperature Thermoplastic, 94V-0 LCP



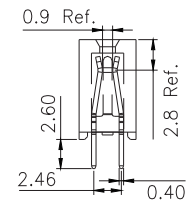
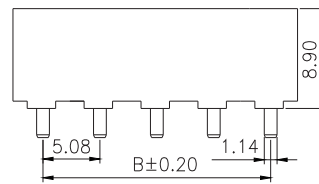
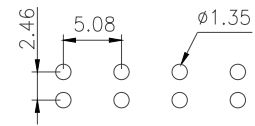
Mating with



P.S. : Suggested mating pin length : 3.8 ~ 8.5 mm



Recommended P.C.Board Layout



No. of Pins/Row	Dimension Information		No. of Pins/Row	Dimension Information	
	A	B		A	B
02	10.16	5.08	11	55.88	50.80
03	15.24	10.16	12	60.96	55.88
04	20.32	15.24	13	66.04	60.96
05	25.40	20.32	14	71.12	66.04
06	30.48	25.40	15	76.20	71.12
07	35.56	30.48	16	81.28	76.20
08	40.64	35.56	17	86.36	81.28
09	45.72	40.64	18	91.44	86.36
10	50.80	45.72	19	96.52	91.44
			20	101.60	96.52

Ordering Codes

C	FB12S110	-XX	XX	X	001	X	X	A	X
No Of Pins Per Row		Plating Code		Material Code	Colour Code	Post			Packing Code
02 - 20		03 - Tin 06 - Gold Flash		C - LCP	N - Black	W - W/O Post			C - Tube

For special length requirement
Please contact our sales personnel

Due to technical progress, all designs, specifications and components are subject to change without notice.