



Dimensional class:

high



Standard colour:

green



Height:

19 mm (.748 in)



Max approved wire sections:

solid: 4 mm² (IMQ); 11 AWG (CSA)

stranded: 2.5 mm² (IMQ); 11 AWG (CSA)

Clamp opening size:

2.6 x 3.5 mm (.102 x .138 in)



Versions:

modular

Single mould poles:

from 2 to 25



Pitches:

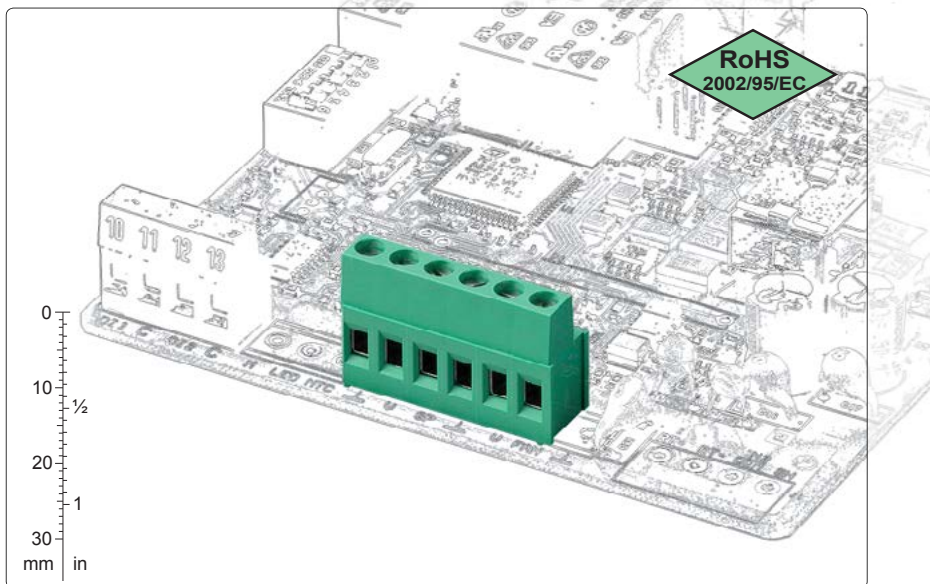
metric 5 mm, 7.5 mm, 10 mm

(.197 in, .295 in, .394 in)



imperial 5.08 mm, 7.62 mm, 10.16 mm

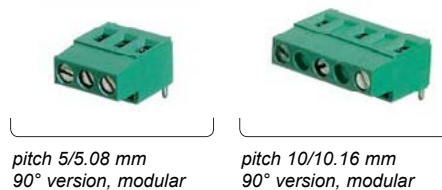
(.200 in, .300 in, .400 in)



pitch 5/5.08 mm
straight, modular

pitch 7.5/7.62 mm
straight, modular

pitch 10/10.16 mm
straight, modular



pitch 5/5.08 mm
90° version, modular

pitch 10/10.16 mm
90° version, modular



available accessories:
from 2 to 9 poles
BSC__00_-0R for rising clamp

Brief description

With the **MSQ** modular series terminal blocks for PCBs, wires up to 4mm² (11 AWG) can be used and consequently a current range of 32A certified can be reached.

It is available in 5 mm (.197 in), 7.5 mm (.294 in) and 10 mm (.394 in) metric pitches, and in 5.08 mm (.200 in), 7.62 mm (.300 in) and 10.16 mm (.400 in) Imperial pitches, in monolithic blocks from 2 to 25 poles, with insertion of the wire parallel or vertical in relation to the PCB.

All the housings are modular, therefore it is possible to compose the monolithic terminal blocks from 2 to 25 poles separately, or to compose

the basic terminal blocks until any number of poles is obtained. By taking advantage of this particular characteristic a minimum stock of basic terminal blocks can be kept.

It is simple to manage the product, the warehouse and the assembly with the Kit packages because several versions can be received with only one code, the part-numbers are significantly reduced and the risk of making mistakes is also reduced.



Hitaltech SA/NV

(Sales Benelux, France & Italy)

T: +32 2725 2075

E: Europe-sales@hitaltech.com

Hitaltech UK Ltd

(Sales UK & Eire)

T: +44 (0) 1253 899910

E: uksales@hitaltech.com

Hitaltech GmbH

(Sales Germany)

T: +49 (0) 351 65 57 39 10

E: de-verkauf@hitaltech.com

Hitaltech Corp. Japan

(Sales Asia)

T: +81 (0)467 23 81 00

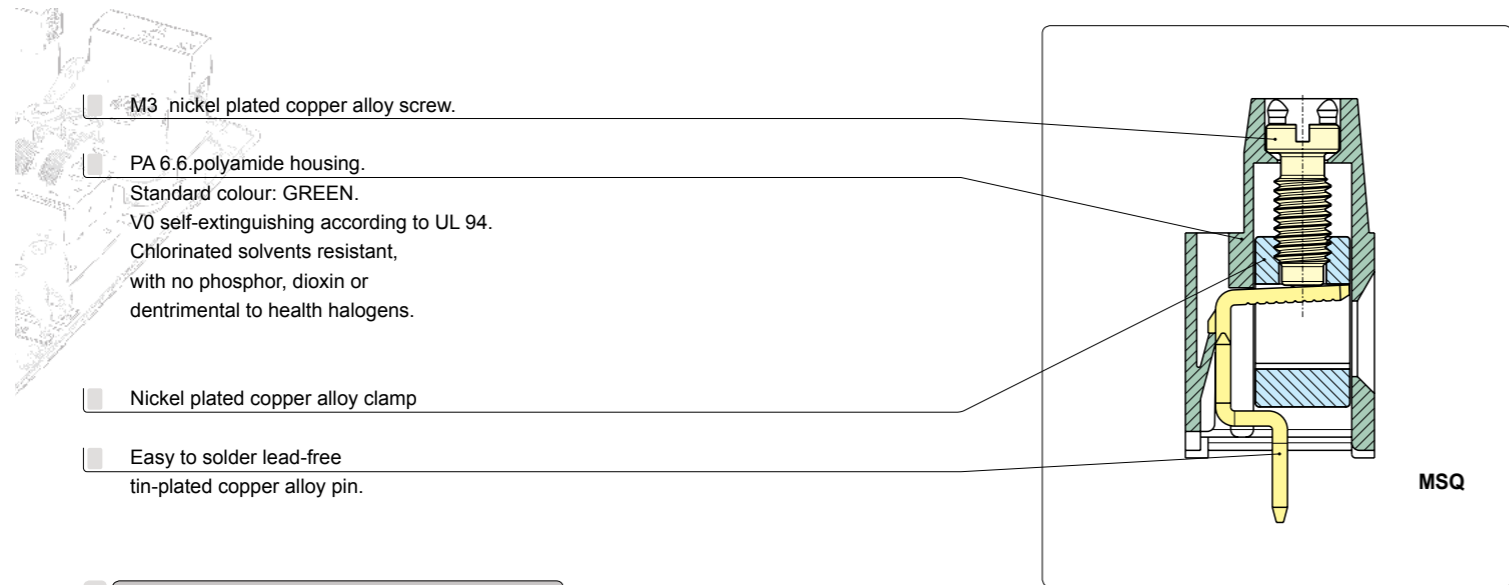
E: japan-sales@hitaltech.com

Hitaltech Headquarters

(Sales for the Rest of the World)

T: +32 2725 2075

E: Europe-sales@hitaltech.com



- M3 nickel plated copper alloy screw.
- PA 6.6 polyamide housing.
Standard colour: GREEN.
V0 self-extinguishing according to UL 94.
Chlorinated solvents resistant,
with no phosphor, dioxin or
dehtrimental to health halogens.
- Nickel plated copper alloy clamp
- Easy to solder lead-free
tin-plated copper alloy pin.

MSQ

Mechanical characteristics

Recommended/highest tightening torque	0.5/0.6 Nm (4.42/5.31 lbf in)
PCB thickness:	max. 2.4 mm (.094 in)
PCB hole diameter:	min. 1.4 mm (.055 in)
Stripping length	6.5 ÷ 7 mm (.26 ÷ .28 in)
Operating temperature range	-40 °C ÷ +110 °C (-40 °F ÷ +230 °F)
Climatic category	40/110/21 according to EN 60068-1

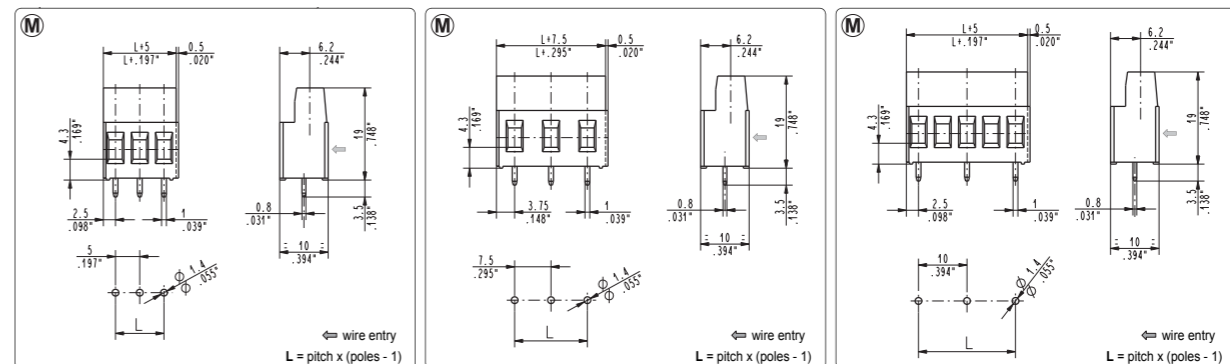
Electric characteristics*

Solid wire section	30÷12 AWG (UL)* 0.05÷4 mm ² (IMQ)*
Stranded wire section	30÷12 AWG (UL)* 0.05÷2.5 mm ² (IMQ)*
Rated voltage for 5 mm (.197 in) and 5.08 mm (.200 in)	300 V (UL)*
Rated voltage for 7.5 mm (.295 in) and 7.62 mm (.300 in)	750 V (IMQ)*
Rated voltage for 10 mm (.394 in) and 10.16 mm (.400 in)	750 V (IMQ)*
Rated current	32 A (IMQ)*
Contact resistance	<15 mΩ
Insulation resistance	>10 ⁹ Ω (500V DC)

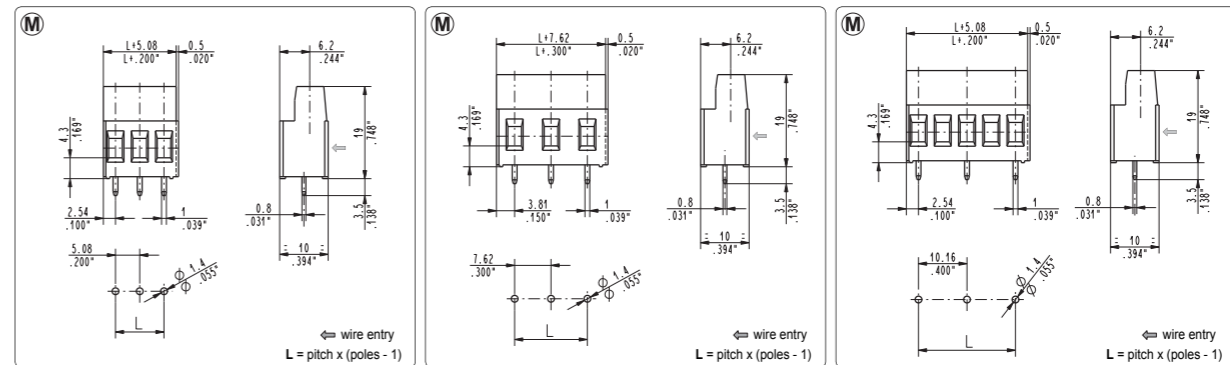
*All the above mentioned data refer to the highest values amongst the certificated ones.
V voltage, I current values and tightening torque are related to the norms to be applied to the product and to its use.

Approvals

IEC-EN	IEC:	250 V - T 110 - 32 A - 4 mm ² solid (24 A - 2.5 mm ² stranded) for 5 mm and 5.08 mm pitch
	EN 60998	750 V - T 110 - 32 A - 4 mm ² solid (24 A - 2.5 mm ² stranded) for 7.5 mm, 7.62 mm, 10 mm and 10.16 mm pitch
UL	UL:	300 V - 24 A (factory wiring), 20 A (field wiring) - 30÷12 AWG - 7 lbf-in for 5 mm, 5.08 mm, 7.5 mm and 7.62 mm pitch
	File E167473	600 V - 24 A (factory wiring), 20 A (field wiring) - 30÷12 AWG - 7 lbf-in for 10 mm and 10.16 mm pitch Application values for end-use equipment have to be in accordance to UL norms and applicable to it.
VDE	VDE:	250 V - 20 A - T 110 - 2.5 mm ² for 5 mm and 5.08 mm pitch
	File n. 40022743	450 V - 24 A - T 110 - 2.5 mm ² for 7.5 mm and 7.62 mm pitch
		750 V - 24 A - T 110 - 2.5 mm ² for 10 mm and 10.16 mm pitch
IMQ	IMQ:	250 V - T 110 - 32 A - 4 mm ² solid (24 A - 2.5 mm ² stranded) for 5 mm and 5.08 mm pitch
	File: EB731	750 V - T 110 - 32 A - 4 mm ² solid (24 A - 2.5 mm ² stranded) for 7.5 mm, 7.62 mm, 10 mm and 10.16 mm pitch



MSQ_001 straight, modular 5 mm / .197" pitch			MSQ_003 straight, modular 7.5 mm / .295" pitch			MSQ_002 straight, modular 10 mm / .394" pitch		
Poles	Code	Pcs/pack W [kg]* Pcs/Ind.** W [kg]*	Poles	Code	Pcs/pack W [kg]* Pcs/Ind.** W [kg]*	Poles	Code	Pcs/pack W [kg]* Pcs/Ind.** W [kg]*
02	MSQ02001	350 1,42 2000 8,12	02	MSQ02003	225 1,08 1250 6,00	01	MSQ01002	350 0,82 2000 4,70
03	MSQ03001	225 1,37 1250 7,61	03	MSQ03003	150 1,08 750 5,40	02	MSQ02002	225 1,06 1250 5,88
04	MSQ04001	175 1,42 1000 8,12	04	MSQ04003	100 0,96 500 4,80	03	MSQ03002	125 0,88 750 5,29
05	MSQ05001	125 1,27 750 7,61				04	MSQ04002	100 0,94 500 4,70
06	MSQ06001	125 1,52 750 9,14				05	MSQ05002	75 0,88 500 5,88
07	MSQ07001	100 1,42 500 7,11				06	MSQ06002	75 1,06 500 7,05
08	MSQ08001	75 1,22 500 8,12				07	MSQ07002	50 0,82 250 4,11
09	MSQ09001	75 1,37 500 9,14				08	MSQ08002	50 0,94 250 4,70
10	MSQ10001	75 1,52 500 10,15				09	MSQ09002	50 1,06 250 5,29
11	MSQ11001	75 1,67 250 5,58				10	MSQ10002	25 0,59 250 5,88
12	MSQ12001	50 1,22 250 6,09				11	MSQ11002	25 0,65 250 6,46
13	MSQ13001	50 1,32 250 6,60				12	MSQ12002	25 0,71 250 7,05
14	MSQ14001	50 1,42 250 7,11				13	MSQ13002	25 0,76 250 7,64
15	MSQ15001	50 1,52 250 7,61						
16	MSQ16001	50 1,62 250 8,12						
17	MSQ17001	50 1,73 200 6,90						
18	MSQ18001	50 1,83 200 7,31						
19	MSQ19001	25 0,96 200 7,71						
20	MSQ20001	25 1,02 200 8,12						
21	MSQ21001	25 1,07 200 8,53						
22	MSQ22001	25 1,12 200 8,93						
23	MSQ23001	25 1,17 200 9,34						
24	MSQ24001	25 1,22 150 7,31						
25	MSQ25001	25 1,27 150 7,61						



MSQ_005 straight, modular 5.08 mm / .200" pitch			MSQ_007 straight, modular 7.62 mm / .300" pitch			MSQ_006 straight, modular 10.16 mm / .400" pitch		
Poles	Code	Pcs/pack W [kg]* Pcs/Ind.** W [kg]*	Poles	Code	Pcs/pack W [kg]* Pcs/Ind.** W [kg]*	Poles	Code	Pcs/pack W [kg]* Pcs/Ind.** W [kg]*
02	MSQ02005	350 1,42 2000 8,12	02	MSQ02007	225 1,08 1250 6,00	01	MSQ01006	350 0,82 2000 4,70
03	MSQ03005	225 1,37 1250 7,61	03	MSQ03007	150 1,08 750 5,40	02	MSQ02006	225 1,06 1250 5,88
04	MSQ04005	175 1,42 1000 8,12				03	MSQ03006	125 0,88 750 5,29
05	MSQ05005	125 1,27 750 7,61				04	MSQ04006	100 0,94 500 4,70
06	MSQ06005	125 1,52 750 9,14				05	MSQ05006	75 0,88 500 5,88
07	MSQ07005	100 1,42 500 7,11				06	MSQ06006	75 1,06 500 7,05
08	MSQ08005	75 1,22 500 8,12				07	MSQ07006	50 0,82 250 4,11
09	MSQ09005	75 1,37 500 9,14				08	MSQ08006	50 0,94 250 4,70
10	MSQ10005	75 1,52 500 10,15				09	MSQ09006	50 1,06 250 5,29
11	MSQ11005	75 1,67 250 5,58				10	MSQ10006	25 0,59 250 5,88
12	MSQ12005	50 1,22 250 6,09				11	MSQ11006	25 0,65 250 6,46
13	MSQ13005	50 1,32 250 6,60				12	MSQ12006	25 0,71 250 7,05
14	MSQ14005	50 1,42 250 7,11				13	MSQ13006	25 0,76 250 7,64
15	MSQ15005	50 1,52 250 7,61						
16	MSQ16005	50 1,62 250 8,12						
17	MSQ17005	50 1,73 200 6,90						
18	MSQ18005	50 1,83 200 7,31						
19	MSQ19005	25 0,96 200 7,71						
20	MSQ20005	25 1,02 200 8,12						
21	MSQ21005	25 1,07 200 8,53						
22	MSQ22005	25 1,12 200 8,93						
23	MSQ23005	25 1,17 200 9,34						
24	MSQ24005	25 1,22 150 7,31						
25	MSQ25005	25 1,27 150 7,61						

Hitaltech UK Ltd
Unit 5, Sovereign Court
Wyrefields, Poulton-le-Fylde
Lancashire FY6 8JX
United Kingdom

Tel : +44 (0)1253 899910
Fax : +44 (0)1253 899920
E-mail : uksales@hitaltech.com

UK & Ireland

Benelux & other countries

Hitaltech sa / nv
Chaussée de Tervuren 113A
B-1160 Brussels
Belgium

Tel : +32 (0)2 725 20 75
Fax : +32 (0)2 725 21 35
E-mail : europa-sales@hitaltech.com

Germany

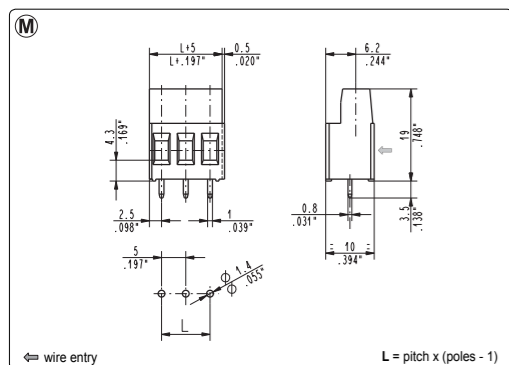
Hitaltech GmbH
Bautzner Strabe 104
D-01099 DRESDEN
Germany

Tel : +49 (0)351/655 739-11
Fax : +49 (0)0351/655 739-19
E-mail : uta.dietze@villa-stephanie-dresden.de

Hitaltech Corp.
2-50, Sakanoshita
Kamakura
Kanagawa
Japan

Japan

Tel : +81 (0) 467 23 81 00
Fax : +81 (0) 467 23 81 01
E-mail : japan-sales@hitaltech.com

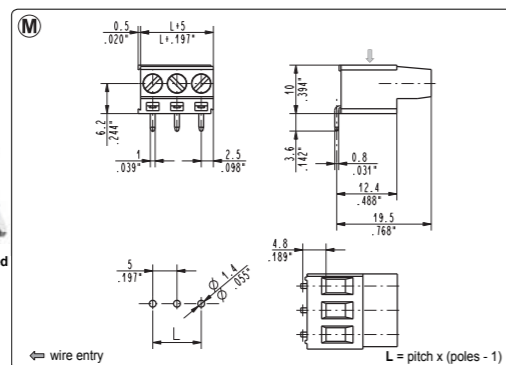


Short Circuited

MSQ_001-000C straight, modular, short circuited

5 mm / .197" pitch

Poles	Code	Pcs/pack.	W [kg]*	Pcs/Ind.**	W [kg]*
02	MSQ02001-000C	350	1,43	2000	8,16
03	MSQ03001-000C	225	1,38	1250	7,65

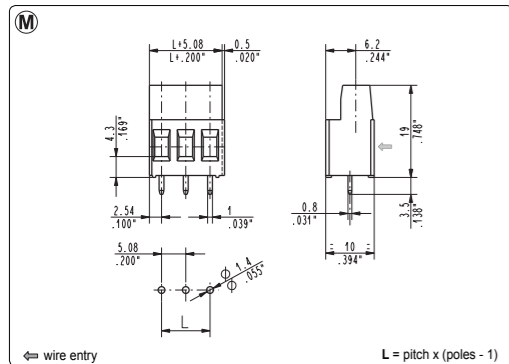


Short Circuited

MSQ_091-000C straight, modular, short circuited

5 mm / .197" pitch

Poles	Code	Pcs/pack.	W [kg]*	Pcs/Ind.**	W [kg]*
02	MSQ02091-000C	350	1,43	2000	8,16
03	MSQ03091-000C	225	1,38	1250	7,65

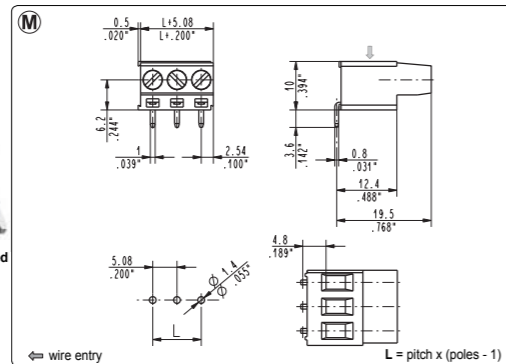


Short Circuited

MSQ_005-000C straight, modular, short circuited

5.08 mm / .200" pitch

Poles	Code	Pcs/pack.	W [kg]*	Pcs/Ind.**	W [kg]*
02	MSQ02005-000C	350	1,43	2000	8,16
03	MSQ03005-000C	225	1,38	1250	7,65



Short Circuited

MSQ_095-000C straight, modular, short circuited

5.08 mm / .200" pitch

Poles	Code	Pcs/pack.	W [kg]*	Pcs/Ind.**	W [kg]*
02	MSQ02095-000C	350	1,43	2000	8,16
03	MSQ03095-000C	225	1,38	1250	7,65

